



£375,000
Corfield Street
London, E2 0DU

PEACH
ESTD. 1999

Offered for sale is this large 1 bedroom apartment located within a period purpose build block in Bethnal Green on a quiet residential street.

The property features from a bright reception room with a bay window, separate kitchen with access to balcony.

There is a double bedroom and a large bathroom with corner bath as well as shower cubical.

Bethnal Green and neighbouring Shoreditch have benefited from much regeneration over recent decades; renovated warehouses, independent shops, artisan coffee houses, highly rated restaurants and reclaimed vintage stores have made the area a popular place to own a property and a favourite destination for visitors. Columbia Road Flower Market, Spitalfields and Whitechapel are all close by as well as Westfield Stratford shopping centre and some fantastic green escapes further afield - Haggerston Park, London Fields, Queen Elizabeth's Olympic Park, and Victoria Park - voted London's favourite outdoor space.

The property is very well located, just a few moments from Bethnal Green Underground Station and a short walk to Victoria Park, the capital's favourite green space among Londoners, Broadway Market and Brick Lane.

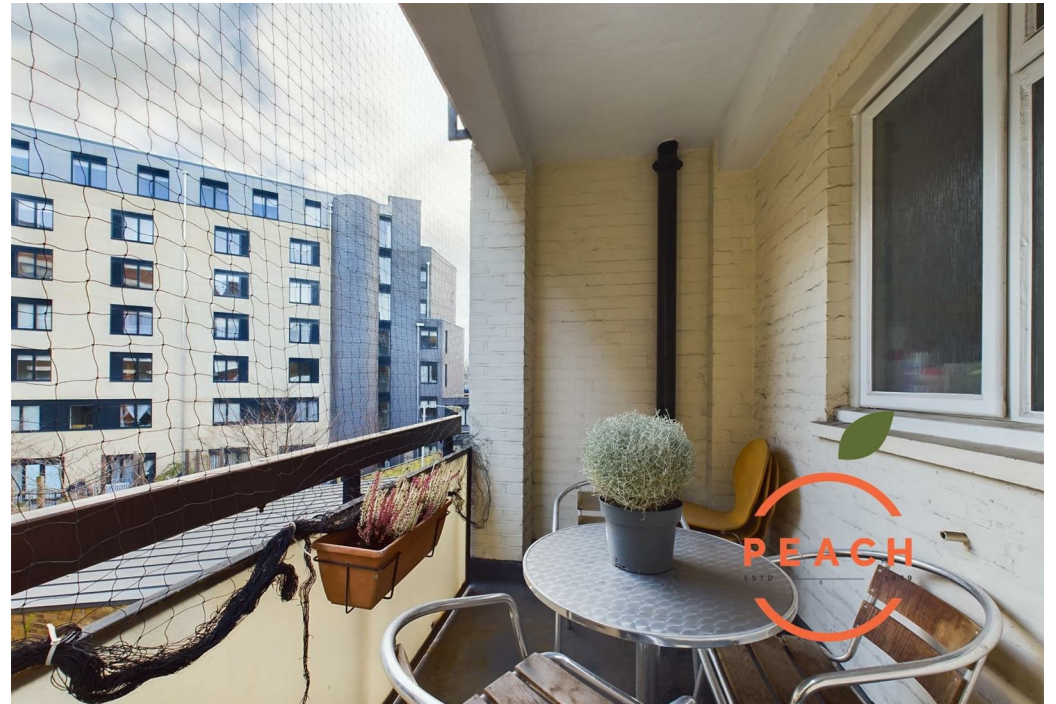
Leasehold: 89 years remaining

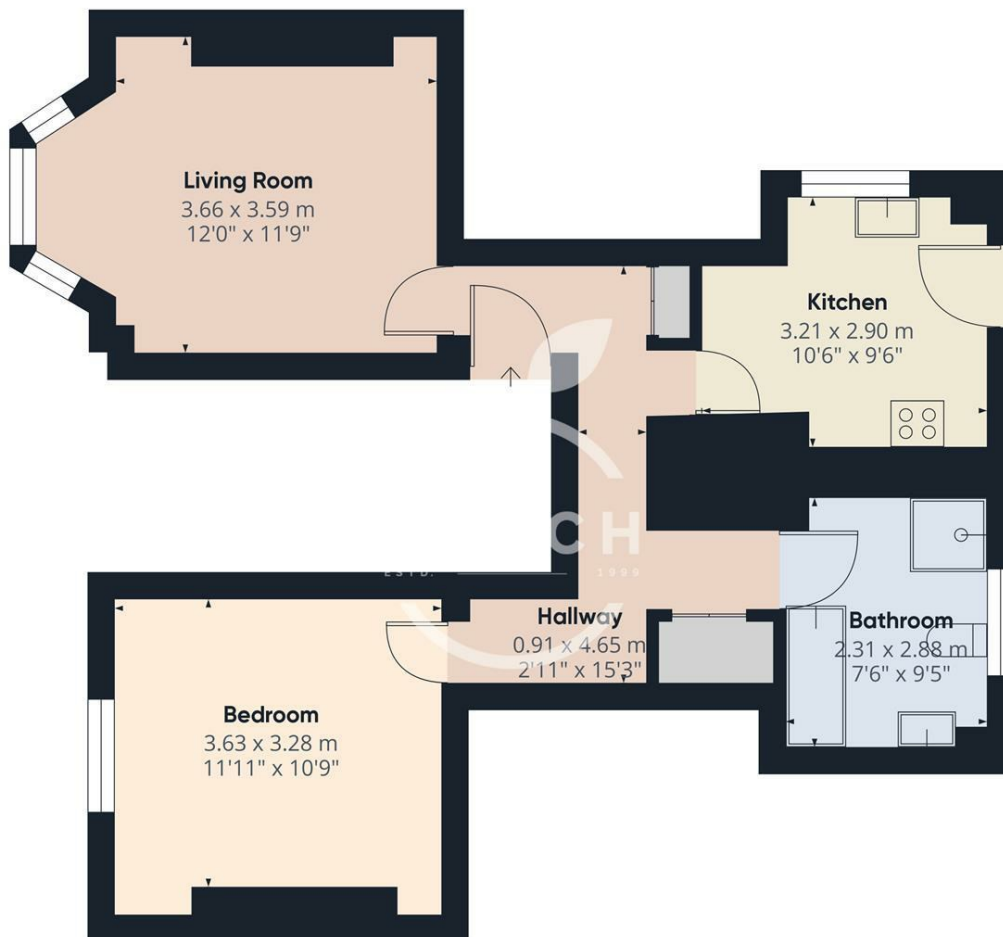
Service Charge: 1643.31

Ground Rent: £10 per annum

Council Tax: Band C







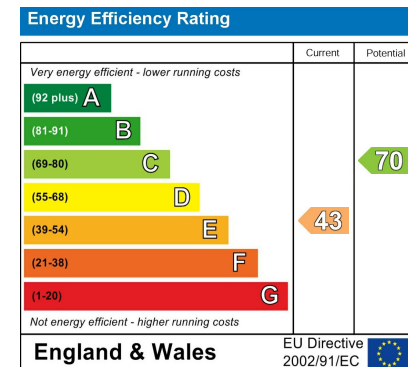
Approximate total area⁽¹⁾
51.35 m²
552.73 ft²

(1) Excluding balconies and terraces.

While every attempt has been made to ensure accuracy, all measurements are approximate, not to scale. This floor plan is for illustrative purposes only.

Calculations are based on RICS IPMS 3C standard.

GIRAFFE360



Agents Note: Whilst every care has been taken to prepare these particulars, they are for guidance purposes only. All measurements are approximate and are for general guidance purposes only and whilst every care has been taken to ensure their accuracy, they should not be relied upon and potential buyers/tenants are advised to recheck the measurements

OFFICE ADDRESS
88 Cheshire Street
London
E2 6EH

OFFICE DETAILS
0207 739 6969
info@peachproperties.com
www.peachproperties.com